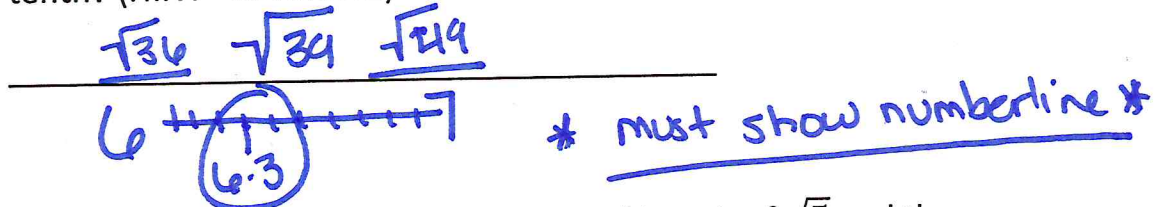


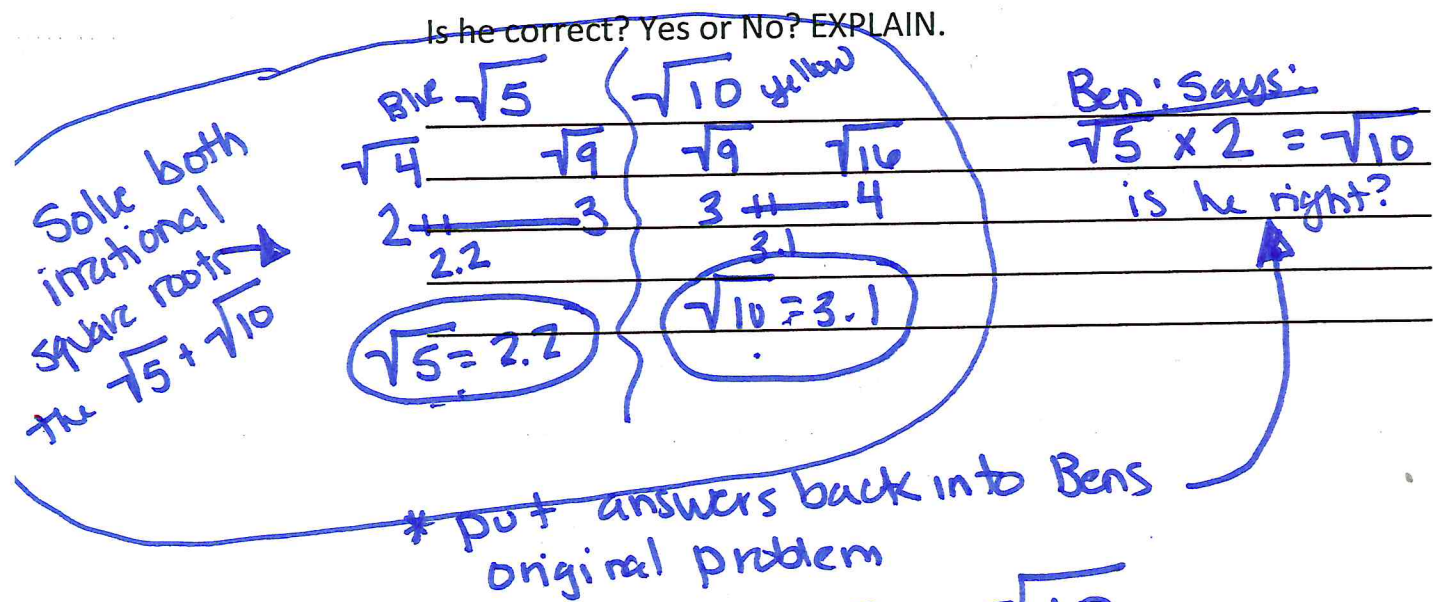
5. Ben is making a Halloween costume. He has to sew different pieces of material together to make his cape.

- A. If the red piece of material has a diagonal length of $\sqrt{39}$ feet. What is the length of the diagonal of the material to the nearest tenth? (HINT* ESTIMATE)



- B. The blue piece of material has a diagonal length of $\sqrt{5}$ and the yellow material has a diagonal length of $\sqrt{10}$. Ben says that the length of the blue material is double the length of the yellow material.

Is he correct? Yes or No? EXPLAIN.



$$\sqrt{5} \times 2 = \sqrt{10}$$

$$2.2 \times 2 = 3.1$$

DOES NOT EQUAL