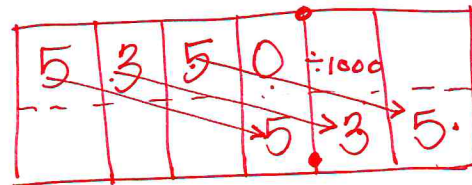
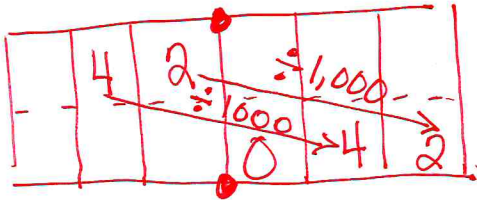


Name KeyDate 11/25/19

1. Express the missing divisor using a power of 10. Explain your reasoning using a place value model.

a. $42 \div \underline{10^3} = 0.042$

b. $5,350 \div \underline{10^3} = 5.35$



2. Estimate the quotient by rounding the expression to relate to a one-digit fact. Explain your thinking in the space below.

a. $562 \div 73 \approx \underline{8}$

$560 \div 70 = 56 \div 7 = 8$

73 is close to 7 tens. The nearest multiple of 7 that's like 562 is 56 tens. So $56 \text{ tens} \div 7 \text{ tens} = 8$

b. $1,475 \div 688 \approx \underline{2}$

$1,400 \div 700 = 14 \div 7 = 2$

688 is close to 7 hundreds.

The nearest multiple of 7 that's like 1,475 is 14 hundreds. So $14 \div 7 = 2$