

4.7.16

The base of the triangle is 22.4 cm . The area of the triangle is 151.2 cm^2 . Find the height of the triangle. Put the appropriate markings on the triangle.

$$A = \frac{b \cdot h}{2} \quad A = \frac{1}{2} b \cdot h$$

$$151.2 = \frac{22.4h}{2}$$

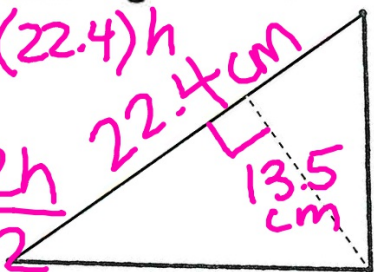
$$\frac{302.4}{22.4} = \frac{22.4h}{22.4}$$

$$13.5 \text{ cm} = h$$

$$151.2 = \frac{1}{2} (22.4) h$$

$$\frac{151.2}{11.2} = \frac{11.2h}{11.2}$$

$$13.5 \text{ cm} = h$$



The area of the parallelogram is 95.22 cm^2 and the height is 6.9 cm . Find the base of the parallelogram. Put the appropriate marking on the parallelogram.

