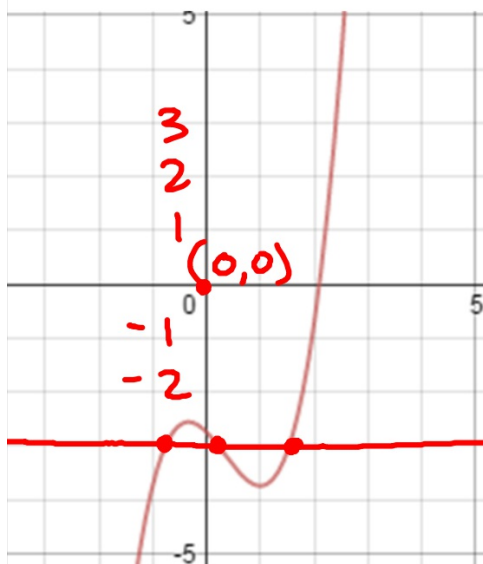


2.29.16

Polynomial Quiz tomorrow.



6. The function $f(x) = x^3 - x^2 - x - \frac{11}{4}$ is graphed in the xy -plane below. If k is a constant such that the equation $f(x) = k$ has three real solutions, which of the following could be the value of k ?

A) 2

B) 0

C) -2

D) -3

Horizontal line
Crosses in 3 places

$k = -3$