

## Silk



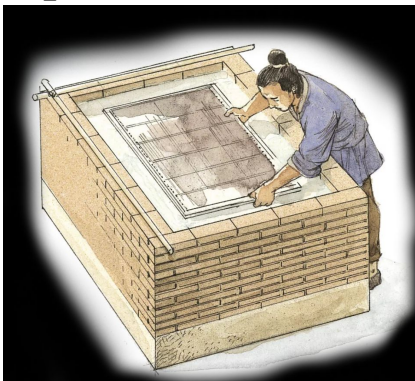
This material was so important in China that sharing the secret method of creating it was punishable by death. Traders from around the world travelled to China for this item made from the cocoons of worms.

## Spinning Wheel



The Han invented this industrial tool to make silk more efficiently and more quickly. Silk threads were quickly wound using this tools.

## Paper



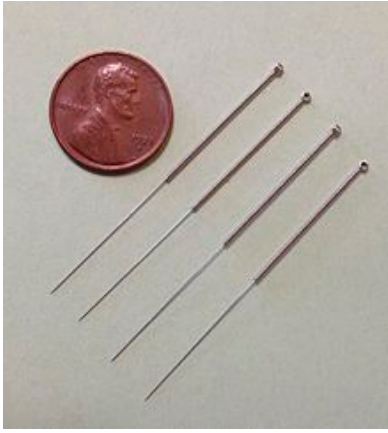
Egyptians first created this invention using papyrus. The Chinese invented this art tool to replace expensive silk or wet bamboo. They invented the perfect material to absorb the ink and more easily bind books.

## Calligraphy



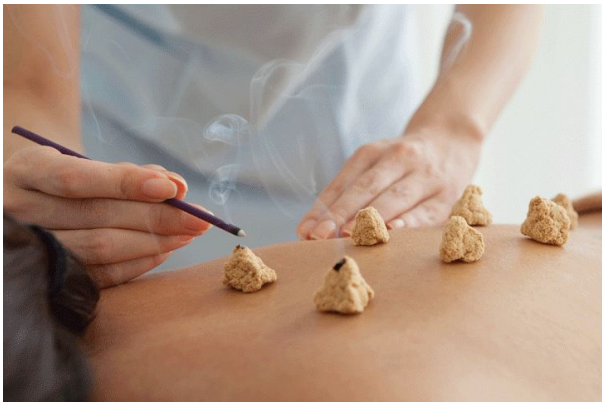
The Chinese used this type of handwriting known for its beauty and natural flow.

## Acupuncture



The Han designed this medical procedure to treat illnesses such as headaches. Doctors would stick tiny needles into pressure points in the body to relieve pain, and rebalance the forces of yin and yang in the body.

## Moxibustion



The Chinese medical procedure to relieve pain and treat ailments such as arthritis. Small cones of dried leaves or sticks were placed on the skin and burned.

## Iron Swords



A weapon made from melted iron molds. The increased the length of this weapon allowed the Han to swing at their enemy from a safer distance away.

## Kite



The Han invented this military weapon to send messages between soldiers, measure the height of enemy walls, and to frighten enemy soldiers during the night with a “fu, fu” sound

### **Crossbow**



A military weapon used to quickly fire arrows from a longer distance. Was used to shoot arrows over higher walls.

### **Seismograph**



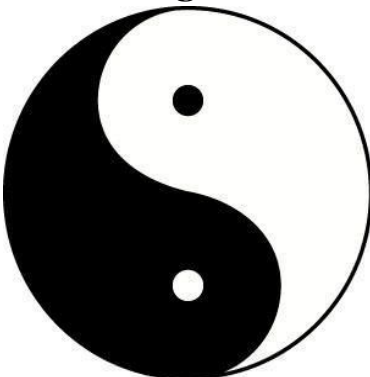
A scientific invention with a pendulum on the inside, surrounded by eight animal heads and eight balls. When the pendulum vibrated, a ball would be released in the direction of movement. Used to detect earthquakes.

### **Compass**



A scientific instrument which uses earth's magnetic forces to determine and point to north.

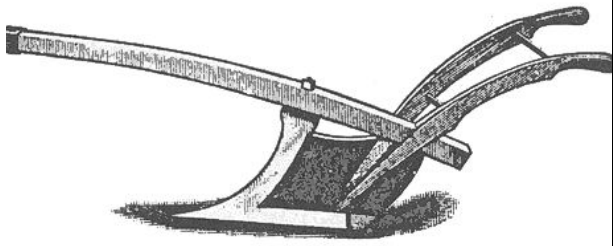
### **Yin & Yang**



The Chinese theory of a perfect balance between opposite forces in nature. The loss of the balance was believed to cause illnesses.



### **Iron Plow**



An important agricultural tool made from melted iron poured into molds. The tool removes the dirt from in front of it, preventing it from getting stuck.

### **Chain Pump**



An agricultural tool invented to bring water from low irrigation ditches up to higher fields of rice paddies and other crops.

### **Wheelbarrow**



A Han invention used to move heavy loads from one area to another quickly and more efficiently. Useful for farming and construction.

### **Pug**



Bred to be companions for Chinese emperors during the Han Dynasty, they were kept in luxury and guarded by soldiers.