

May use a calculator

Common Assessment Review for 6.G.A.2 and 6.G.A.4

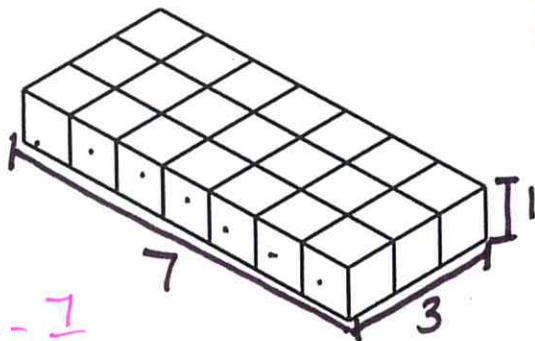
NAME: _____

Page 25, 26

$$V = l \cdot w \cdot h$$

- 1.) 6.G.A.2 Which of the rectangular prisms have a volume of $1\frac{3}{4}$ units³, given each cube is defined by the fractional edge length of $\frac{1}{4}$ inch? Choose all correct answers.

a.)



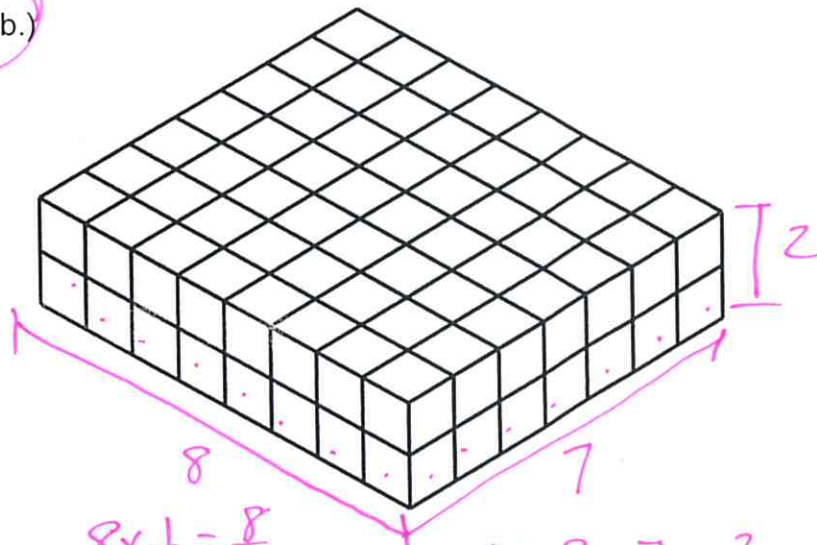
$$7 \times \frac{1}{4} = \frac{7}{4}$$

$$3 \times \frac{1}{4} = \frac{3}{4}$$

$$1 \times \frac{1}{4} = \frac{1}{4}$$

$$V = \frac{7}{4} \times \frac{3}{4} \times \frac{1}{4} = \frac{21}{64}$$

b.)



$$8 \times \frac{1}{4} = \frac{8}{4}$$

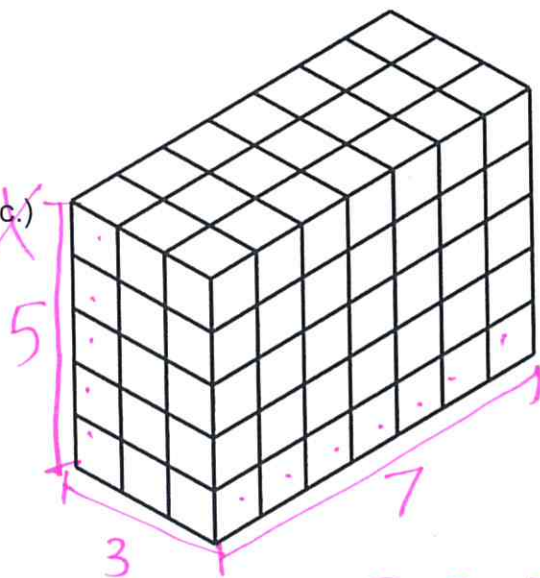
$$7 \times \frac{1}{4} = \frac{7}{4}$$

$$2 \times \frac{1}{4} = \frac{2}{4}$$

$$V = \frac{8}{4} \times \frac{7}{4} \times \frac{2}{4}$$

$$\frac{112}{64} = 1\frac{3}{4}$$

c.)



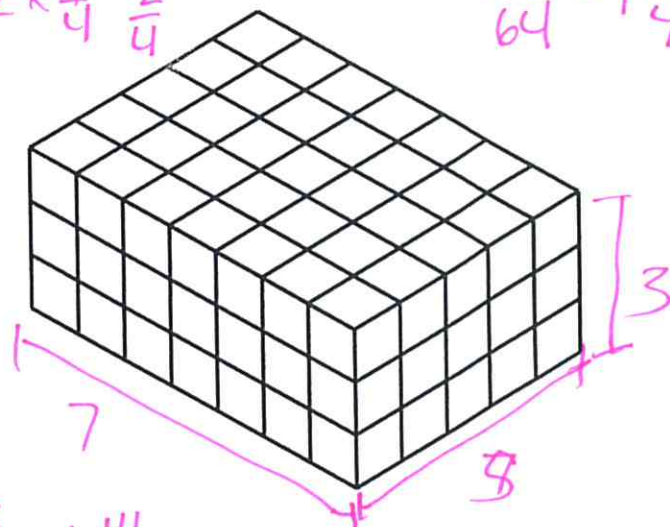
$$5 \times \frac{1}{4} = \frac{5}{4}$$

$$\frac{5}{4} \times \frac{3}{4} \times \frac{7}{4} = \frac{105}{64} = 1\frac{41}{64}$$

$$3 \times \frac{1}{4} = \frac{3}{4}$$

$$7 \times \frac{1}{4} = \frac{7}{4}$$

d.)



Same as c

Follow steps in foldable on Page 26.