

# Area of a Triangle Practice.

NAME: \_\_\_\_\_

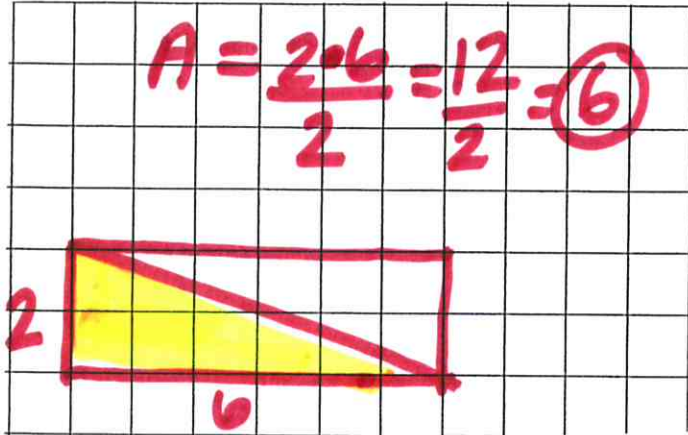
DATE \_\_\_\_\_

HOUR \_\_\_\_\_

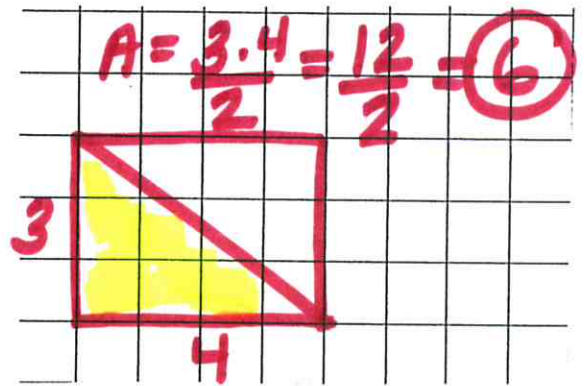
Using the information provided, draw each triangle using the graph paper. Label and color the triangle.

Next, find the area by first making a rectangle or square, and then dividing that area by 2.

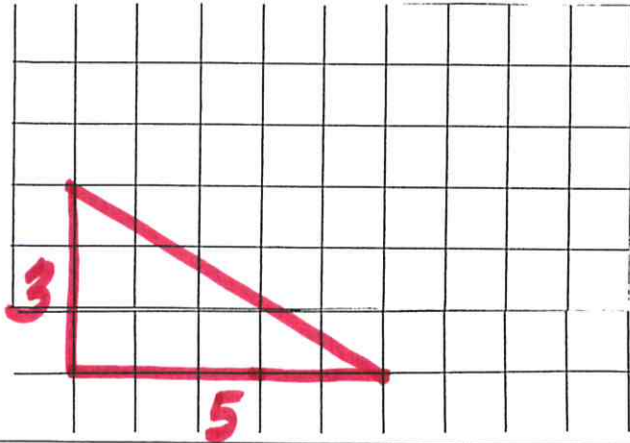
1. A triangle with side length 6 and 2



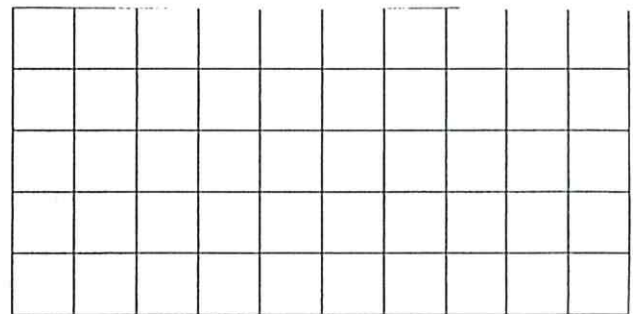
2. A triangle with side length 4 and 3



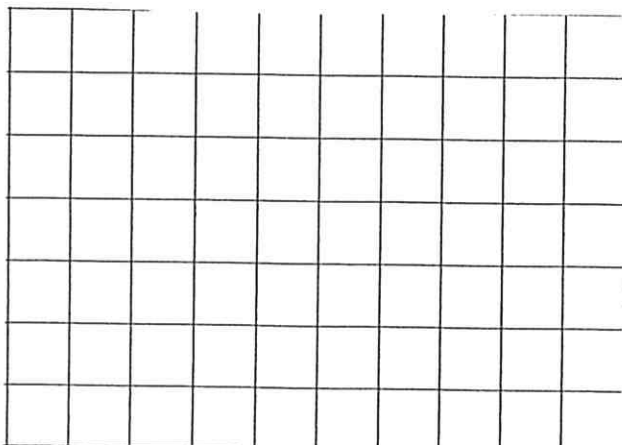
3. A triangle with side length 3 and 5



4. A triangle with side length 5 and 2



5. A triangle with side lengths of 3



6. A triangle with side lengths of 4

