

There are no calculators on this test!

6.NS.A1 Fractions (Green Book)

1.  $\frac{8}{9} \div \frac{2}{3} = \frac{8}{9} \times \frac{3}{2} = \frac{4}{3} = 1\frac{1}{3}$

5.  $\frac{7}{9} \div \frac{1}{3} = \frac{7}{9} \times \frac{3}{1} = \frac{7}{3} = 2\frac{1}{3}$

2.  $\frac{7}{8} \div \frac{1}{2} = \frac{7}{8} \times \frac{2}{1} = \frac{7}{4} = 1\frac{3}{4}$

6.  $\frac{2}{5} \div \frac{4}{5} = \frac{2}{5} \times \frac{5}{4} = \frac{1}{2}$

3.  $\frac{5}{6} \div \frac{1}{9} = \frac{5}{6} \times \frac{9}{1} = \frac{15}{2} = 7\frac{1}{2}$

7.  $\frac{1}{8} \div \frac{3}{4} = \frac{1}{8} \times \frac{4}{3} = \frac{1}{6}$

4.  $\frac{5}{7} \div \frac{1}{7} = \frac{5}{7} \times \frac{7}{1} = 5$

8.  $\frac{8}{9} \div \frac{1}{4} = \frac{8}{9} \times \frac{4}{1} = \frac{32}{9} = 3\frac{5}{9}$

9.  $\frac{5}{9} \times \frac{7}{8} = \frac{5}{9} \times \frac{7}{8} = \frac{35}{72}$

10.  $\frac{2}{3} \times \frac{5}{8} = \frac{2}{3} \times \frac{5}{8} = \frac{5}{12}$

11.  $\frac{2}{5} \times \frac{1}{9} = \frac{2}{5} \times \frac{1}{9} = \frac{2}{45}$

12.  $\frac{1}{2} \times \frac{10}{11} = \frac{1}{2} \times \frac{10}{11} = \frac{5}{11}$

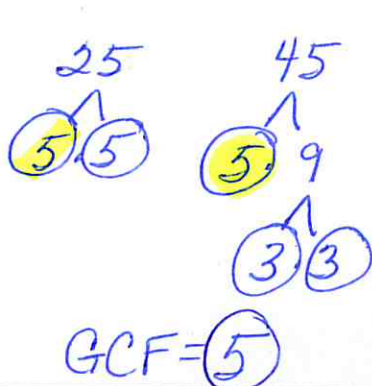
13.  $\frac{3}{4} \times \frac{5}{6} = \frac{3}{4} \times \frac{5}{6} = \frac{5}{8}$

14.  $\frac{4}{9} \times \frac{5}{6} = \frac{4}{9} \times \frac{5}{6} = \frac{10}{27}$

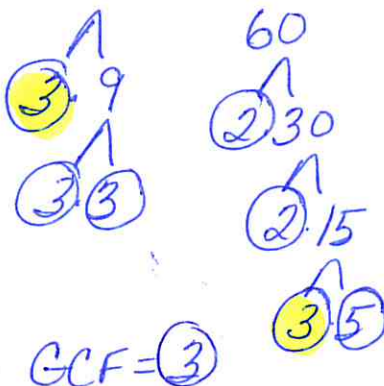
6.NS.4 Greatest Common Factor, Distributive Property

Find the Greatest Common Factor using Factor Trees

15. 25 and 45



16. 27 and 60



17. 32 and 40

