

Long /e/: Vowel Teams “ee”
and “ea”

Long /e/ can be spelled many ways. This lesson looks at long /e/ spelled as “ea” or “ee.” Choose the word that matches the picture.

Choose the **word** that matches the picture.

A. be

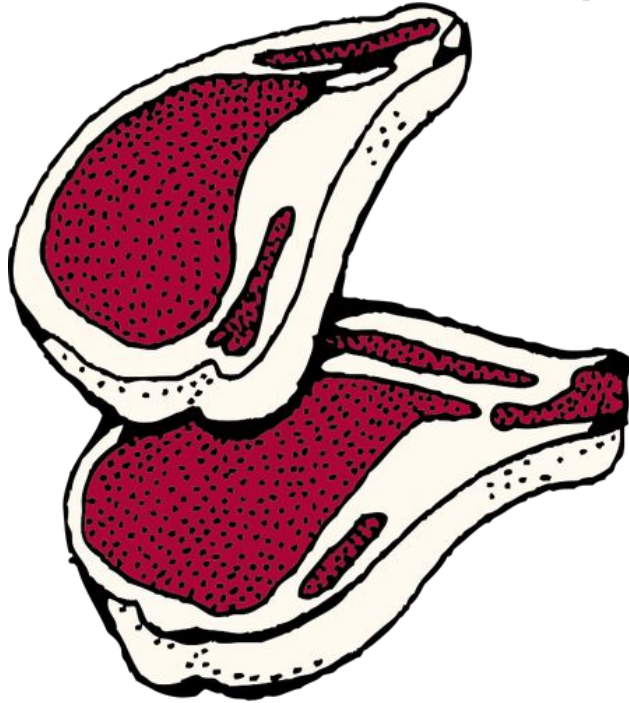
B. bee

C. bea



Choose the **word** that matches the picture.

- A. meat
- B. mete
- C. meet



Choose the **word** that matches the picture.

A. seel

B. sele

C. seal



Choose the **word** that matches the picture.

A. tree

B. tre

C. trea



Choose the **word** that matches the picture.

- A. beek
- B. beak
- C. beke



Choose the **word** that matches the picture.

A. lefe

B. leef

C. leaf



Choose the **word** that matches the picture.

A. feet

B. feat

C. feete



Choose the **word** that matches the picture.

- A. streat
- B. street
- C. strete



Choose the **word** that matches the picture.

A. teecher

B. techer

C. teacher



Choose the **word** that matches the picture.

A. sea

B. see

C. cee



Choose the **word** that matches the picture.

A. wheal

B. whel

C. wheel



Choose the **word** that matches the picture.

- A. beach
- B. beech
- C. beche

