

NAME: \_\_\_\_\_

**GRADE 3 PRE-TEST – UNIT 4**

- 1) The zookeeper feeds a polar bear 3 fish each day for 7 days. How many fish will the zookeeper feed the polar bear? 3.OA.1/ 3.OA.3

Number model:

\_\_\_\_\_

Days	Fish Per Day	Fish in All

Answer: \_\_\_\_\_

(unit)

Which array(s) model the story problem above?

3.OA.3

2)


Yes

No

3)


Yes

No

4)

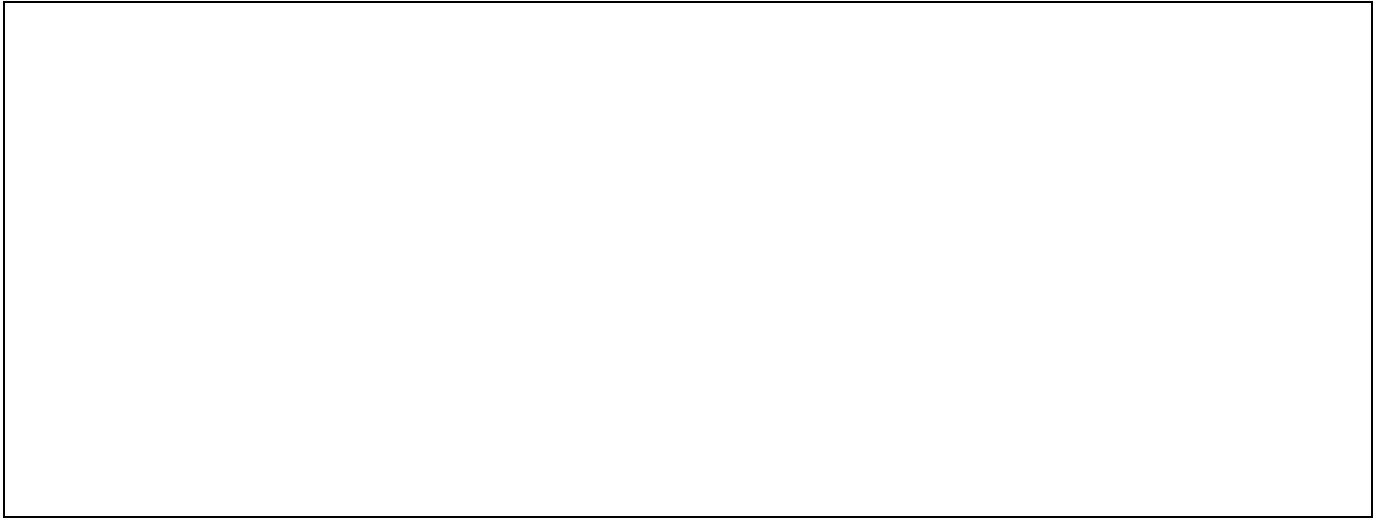

Yes

No

- 5) Mona cuts 12 feet of ribbon into 3 equal pieces to share it with her two sisters.

Use words, numbers, and/or pictures to show the length of each piece.

3.OA.3



Carrie had 20 stickers to share equally among her 4 friends. How many stickers does each friend get?

3.OA.1/ 3.OA.2

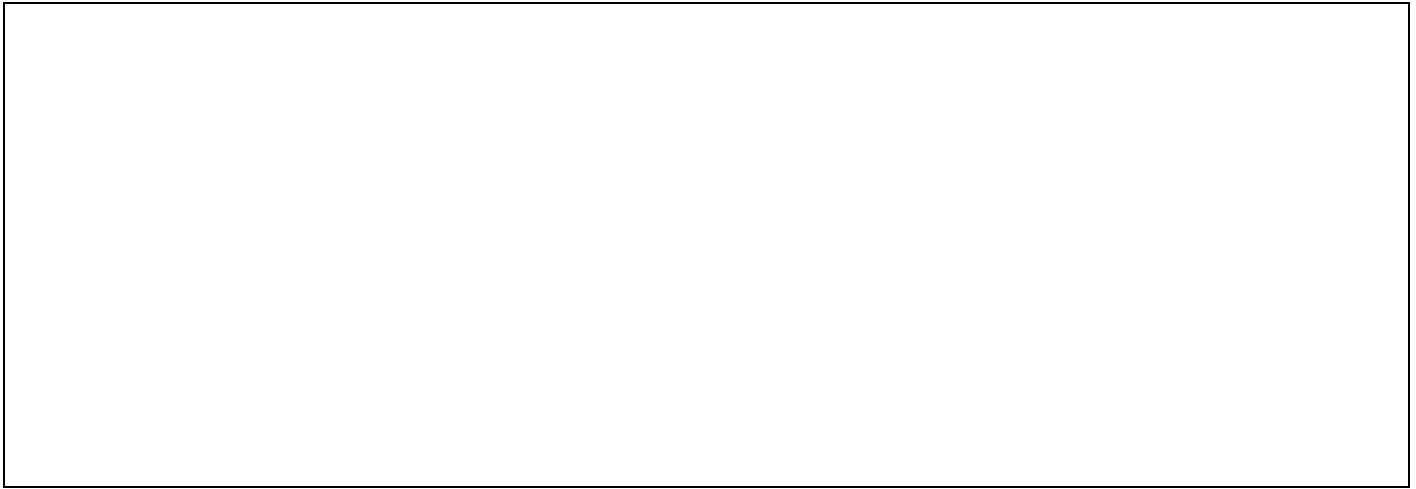
Which number sentence (equation) models this problem?

- |    |                 |     |    |
|----|-----------------|-----|----|
| 6) | $20 - 4 = 16$   | Yes | No |
| 7) | $4 \div 20 = 5$ | Yes | No |
| 8) | $20 \div 4 = 5$ | Yes | No |

Lisa and Matt shared 12 pencils equally. How many pencils does each child get?

3.OA.1 / 3.OA.2

9) Draw a model to show your work.



10) Explain how you came up with your answer.

---

---

In which equation(s) is the missing number 3?

3.OA.4

11)  $2 \times \underline{\quad} = 8$  Yes No

12)  $27 \div \underline{\quad} = 9$  Yes No

13)  $15 = \underline{\quad} \times 5$  Yes No

14) Write two whole numbers that have a product of 24. (Both numbers must be greater than one).

3.OA.4

\_\_\_\_\_, \_\_\_\_\_

15) Write a story problem that fits the equation  $2 \times 12 = \underline{\hspace{2cm}}$

### 3.OA.4

---

---

---

Fill in the blanks. Use  $>$ ,  $<$ , or  $=$ .

3.OA.5 / 3.OA.7

16)  $3 \times 6$  \_\_\_\_\_  $2 \times 7$

17)  $5 \times 4$  \_\_\_\_\_  $4 \times 5$

18)  $6 \times 1$  \_\_\_\_\_  $12 \times 0$

Reminder:

$>$  means is greater than

$<$  means is less than

*= means is the same as*

19) Write a number sentence for the array.

### 3.OA.5


Number Sentence: \_\_\_\_\_

- 20) Mariam said the  $8 \times 4$  is the same as  $(8 \times 2) + (8 \times 2)$ . Is she correct? Explain your answer.

3.OA.5

---

---

---

Is 2 the unknown factor in the equation(s) below?

3.OA.6

- |     |                                  |     |    |
|-----|----------------------------------|-----|----|
| 21) | $18 \div \underline{\quad} = 6$  | Yes | No |
| 22) | $5 = 10 \div \underline{\quad}$  | Yes | No |
| 23) | $20 \div \underline{\quad} = 10$ | Yes | No |

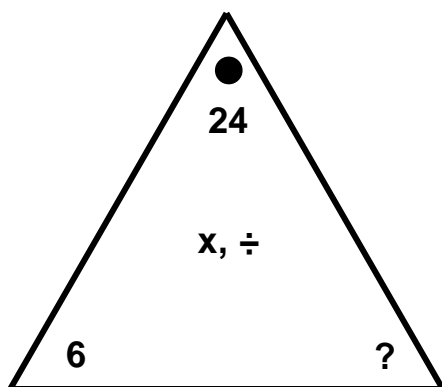
- 24) Use the numbers 2, 7, and 14 to write the number models for the multiplication/division fact family.

3.OA.6 / 3.OA.7

<hr/>	<hr/>
<hr/>	<hr/>

25)

3.OA.6



Explain how you found the missing number.

---

---