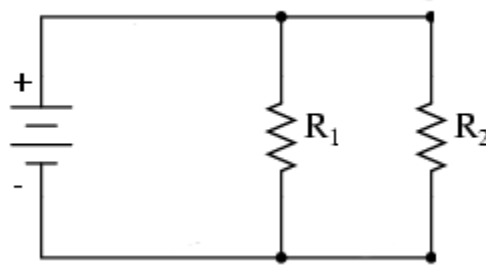


## Homework #7

Complete the following two problems on a separate sheet of paper:

#1 Find the total current through the parallel circuit. Assume that the circuit contains a 6 volt battery with  $R_1 = 2\ \Omega$  and  $R_2 = 3\ \Omega$ . What would the current be if it was a series circuit?



#2 Find the total current through the parallel circuit. Assume that the circuit contains a 21 volt battery with  $R_1 = 7\ \Omega$ ,  $R_2 = 7\ \Omega$ , and  $R_3 = 7\ \Omega$ . What would the current be if it was a series circuit?

