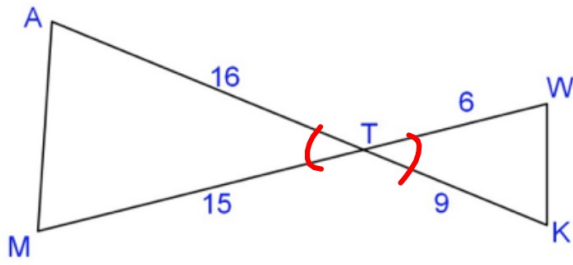
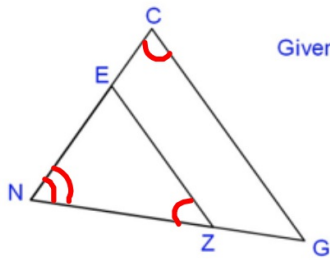


1.) Are these triangles similar? If yes, write a similarity statement.



SAS ~?
 $\frac{16}{9} \neq \frac{15}{6}$
 Not similar

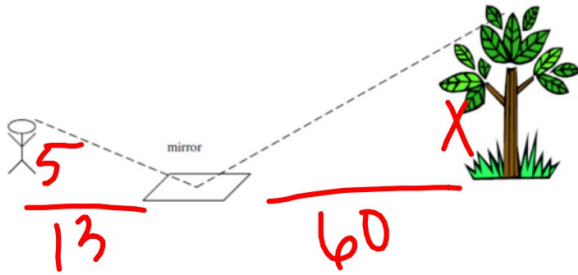
2.) Are these triangles similar? If yes, write a similarity statement.



Given: $\angle NCG \cong \angle NZE$

AA ~
 $\triangle NEZ \sim \triangle NCG$

3.) Abe is 5 feet tall and is 13 feet from the mirror. The mirror is located 60 feet from the tree. How tall is the tree?

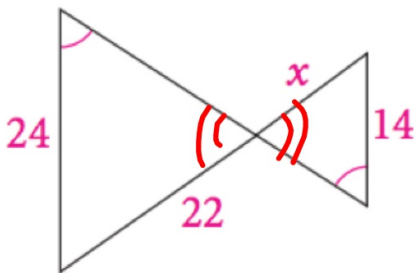


$$\frac{5}{x} = \frac{13}{60}$$

$$13x = 300$$

$$x = 23.08\bar{6}$$

4.) Are these triangles similar? If yes, write a similarity statement. Then find the value of x .

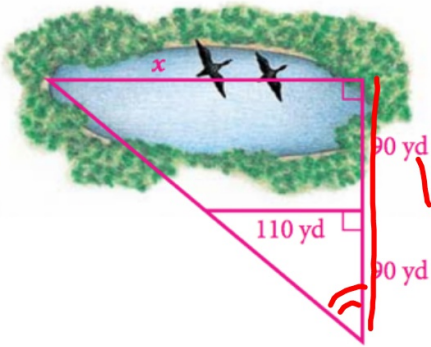


AA ~

$$\frac{24}{14} = \frac{22}{x}$$

$$x = 12.\bar{83}$$

5.) Are these triangles similar? If yes, write a similarity statement. Then find the value of x.



AA~

$$\frac{110}{x} = \frac{90}{180}$$
$$90x = 19,800$$
$$x = 220$$