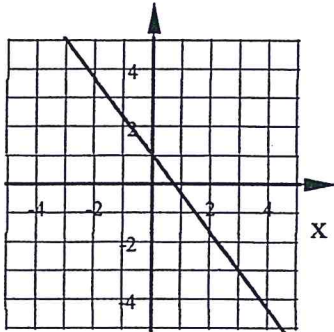


Algebra 1 Bellwork Monday, January 4, 2016

Find the slope of the line containing each pair of points. Reduce fractional answers.

1. $(-9, 18) \& (6, -2)$ 2. $(-7, -4) \& (15, -4)$ 3. $(8, -11) \& (8, 5)$

4. Find the slope of the line shown in this graph.



5. Below is a chart showing how much a plumber would charge to come out and work on your leak. What does the plumber charge per hour for labor?

# hour	\$ total charge
1	99
3	147
7	243
13	387

Algebra 1 Bellwork Monday, January 4, 2016

Find the slope of the line containing each pair of points. Reduce fractional answers.

1. $(-9, 18) \& (6, -2)$ 2. $(-7, -4) \& (15, -4)$ 3. $(8, -11) \& (8, 5)$

$$m = \frac{18 - (-2)}{-9 - 6} = \frac{20}{-15}$$

$$m = -\frac{4}{3}$$

$$m = \frac{-4 - (-4)}{15 - (-7)} = \frac{0}{22}$$

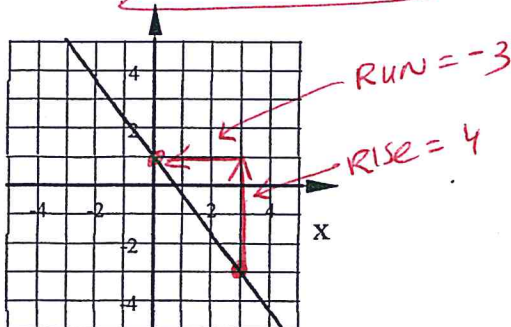
$$m = 0$$

$$m = \frac{5 - (-11)}{8 - 8} = \frac{16}{0}$$

m is undefined

4. Find the slope of the line shown in this graph.

$$m = -\frac{4}{3}$$



5. Below is a chart showing how much a plumber would charge to come out and work on your leak. What does the plumber charge per hour for labor?

$$\frac{\$48}{2 \text{ hrs}} = \$24 \text{ per hour}$$

# hour	\$ total charge
1	99
3	147
7	243
13	387

$$3 - 1 = 2 \text{ hrs}$$

$$147 - 99 = \$48$$