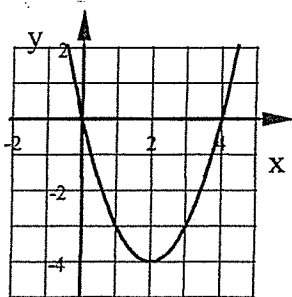


1. What is the equation for a Quadratic Function in Standard Form?
2. What do we call the graph of a Quadratic Function?
3. What is the Vertex of a parabola?
4. a) What is the Axis of Symmetry (also called Line of Symmetry) of a parabola?
- b) What kind of line is the Line of Symmetry (LOS)?
- c) What does the equation for the LOS always look like?
- c) Where is the LOS located on every parabola?
5. What must be true about the equation of a parabola for the graph to open up?
6. What must be true about the equation of a parabola for the graph to open down?
7. When is the vertex of a parabola called a Minimum?
8. When is the vertex of a parabola called a Maximum?
9. Use the graph below. State the coordinates of the vertex and the equation of the LOS:



Coord of Vertex:

Eq of LOS:

10. If the vertex of a parabola is the point  $(-13, 8)$  write the equation of the LOS.
11. If the axis of symmetry of the parabola  $y = -2x^2 + 24x + 11$  is  $x = 6$  find the coordinates of the Vertex.