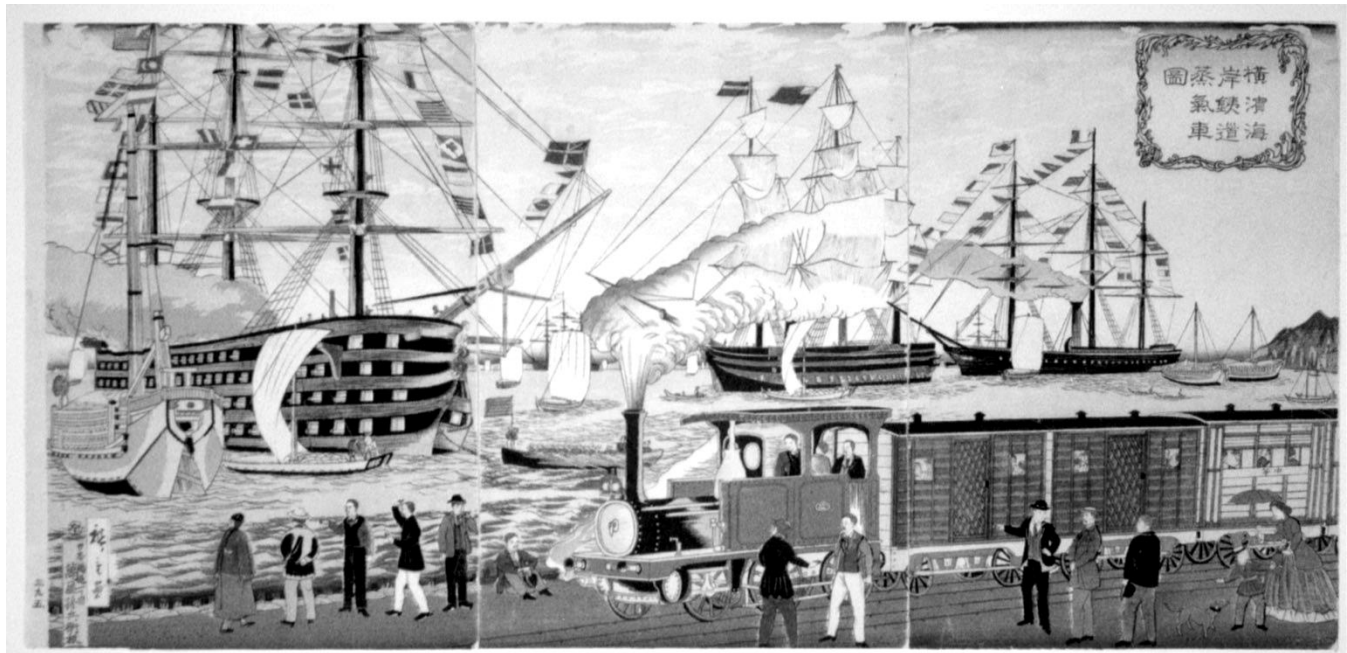
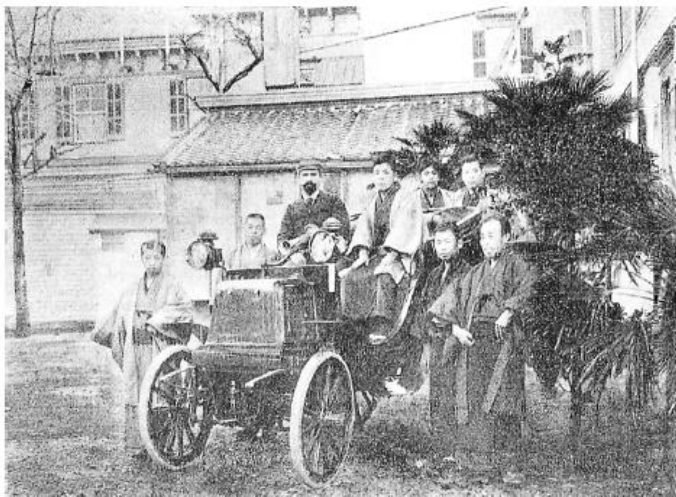


Use the photos to answer the following questions in the spaces provided.



The picture of the steam locomotive railway at Yokohama seaside, drawn by Utagawa Hiroshige III, 1874.

1. What evidence in the picture **above** tells you it is from Meiji era Japan?

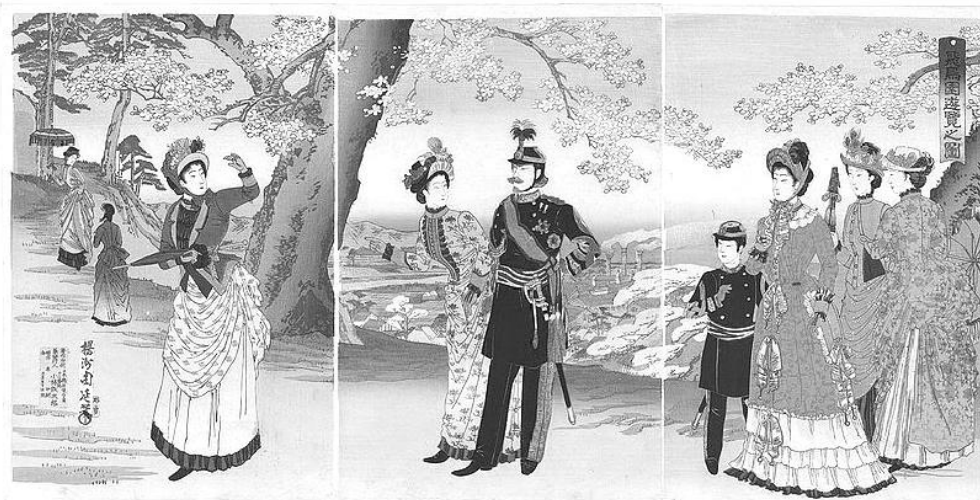


2. Around what year do you think the picture to the **left** was taken in Japan? Explain

3. Using the picture to the **right**, where have we seen images like this before? What do you think they are producing?



4. What evidence in the picture to the **right** tells you it is from Meiji era Japan?



Woodblock print of Emperor Meiji and his family on a walk in a park , 1890.



5. Using the family photo to the **left**, what tells you it was taken *after* the arrival of Commodore Perry?

6. What evidence in the print to the **right** tells you it is from Meiji era Japan?

