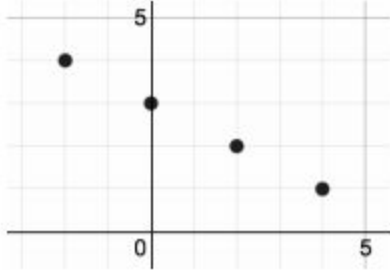
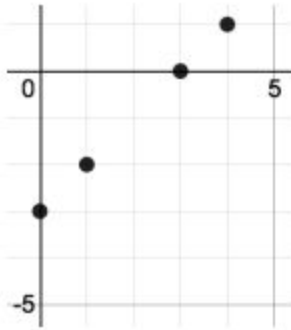


4. **REINFORCE** Write the equation that fits the points.

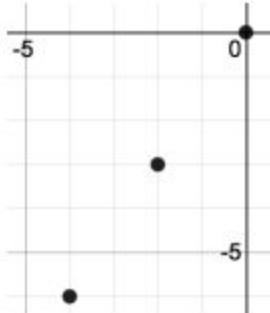
a.



b.



c.

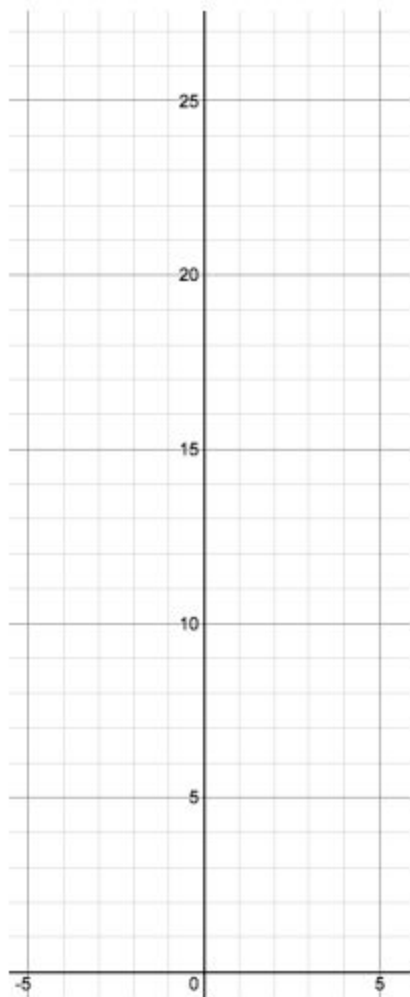


9. **REINFORCE** Graph each function described and write the equation.

a. A linear function passing through the origin and the point $(-8, -2)$

10. **REINFORCE** Graph each function and identify the family type.

a. $f(x) = 3^x$



b. $f(x) = (x + 2)(x - 2)$

