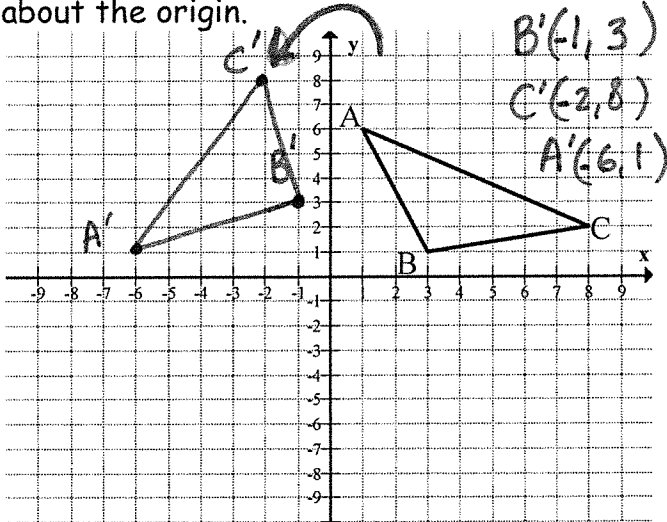


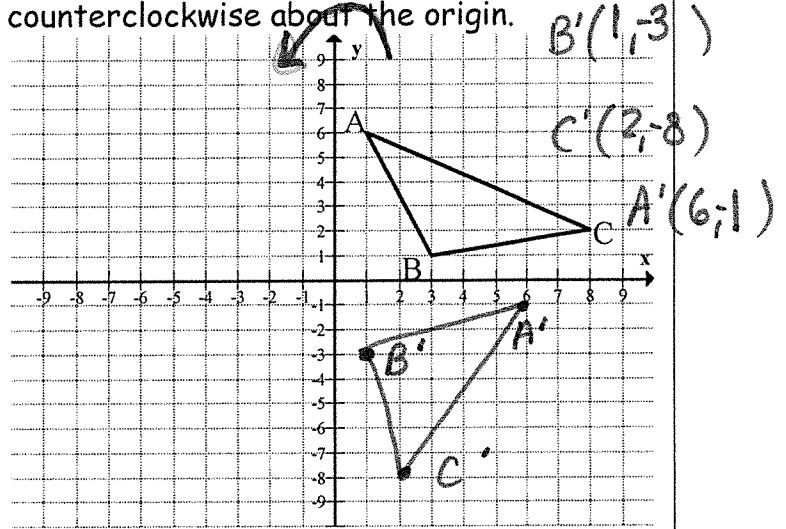
Rotations Worksheet

For #1-4, draw the triangle after each transformation and give the coordinates of A', B' and C'.

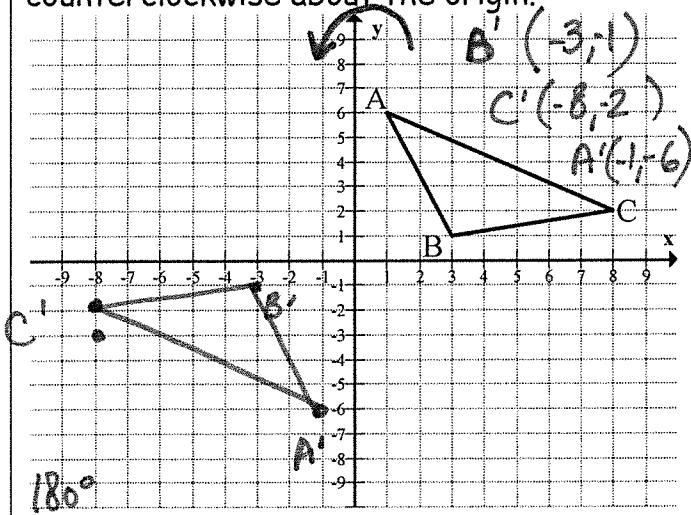
1. Rotate the triangle 90° counterclockwise about the origin.



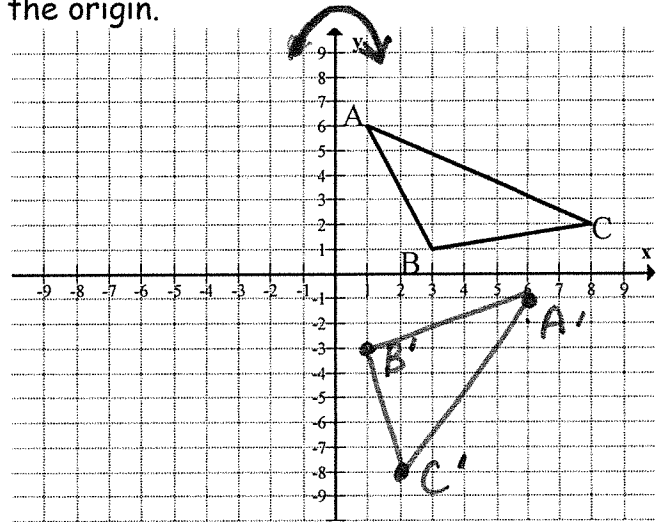
2. Rotate the triangle 270° counterclockwise about the origin.



3. Rotate the triangle 180° counterclockwise about the origin.



4. Rotate the triangle 90° clockwise about the origin.



Complete.

5. Give the coordinates of D(-2, -4) after a 270° counterclockwise rotation about the origin.

$$D(-2, -4) \rightarrow D'(4, -2)$$

6. Give the coordinates of E(-4, 5) after a 180° counterclockwise rotation about the origin.

$$E(-4, 5) \rightarrow E'(4, -5)$$