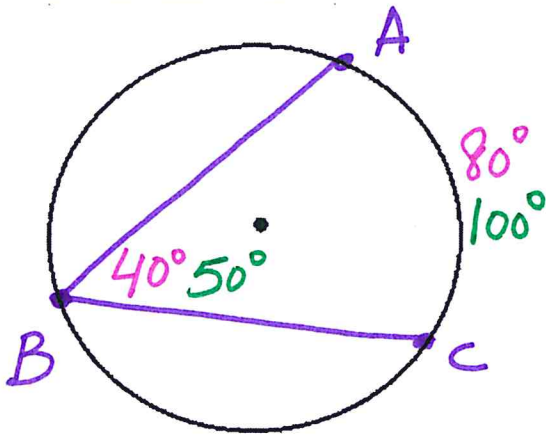


# Notes 3/11/19

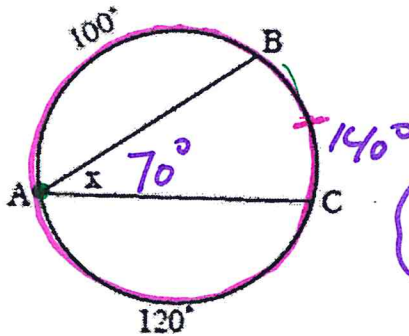
## Inscribed Angles



### Characteristics:

1. Vertex is on the edge of the Circle
2. Name the Same  $\angle ABC$
3. Angle measure is half the Arc measure.

Solve for x.

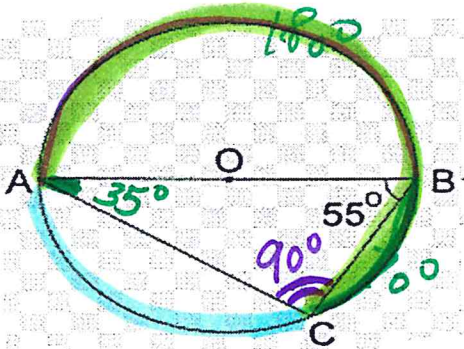


$$360^\circ - 100^\circ - 120^\circ = 140^\circ$$

$$\angle X = 70^\circ$$

For the given circle, find each:

$\widehat{AB}$  is a semicircle



$$180^\circ - 90^\circ - 55^\circ = 35^\circ$$

a)  $m \angle ACB = 90^\circ$

b)  $m \widehat{BC} = 70^\circ$

c)  $m \angle CAB = 35^\circ$

d)  $m \widehat{CBA} = 180^\circ + 70^\circ = 250^\circ$