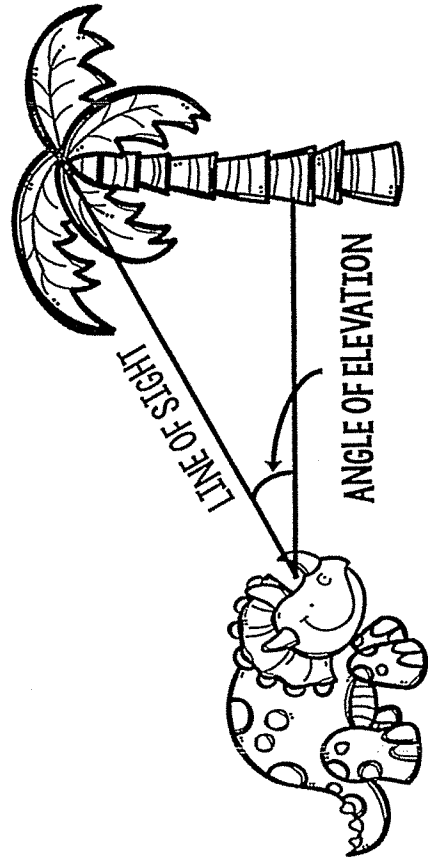
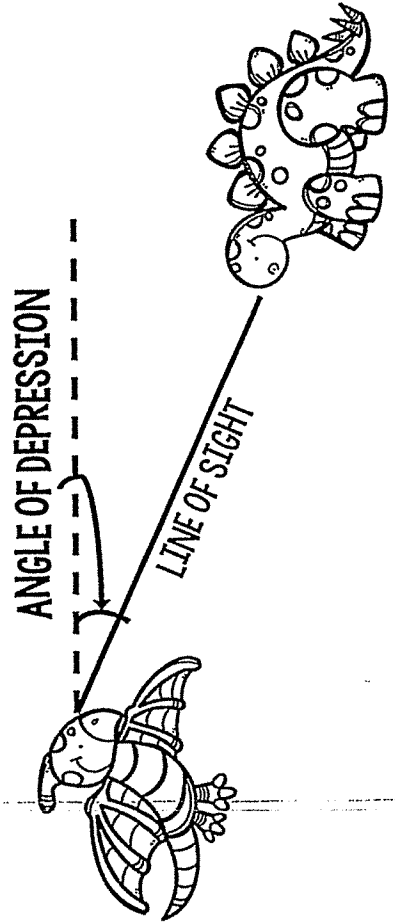


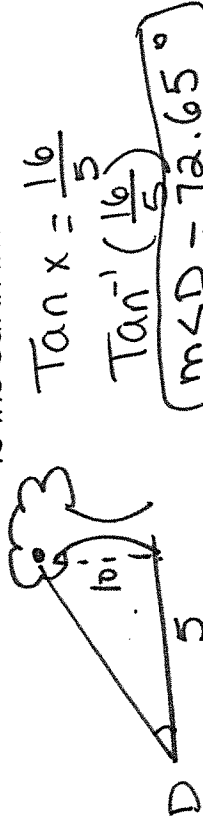
WHEN LOOKING UP TO AN OBJECT, ANGLE OF ELEVATION IS FORMED



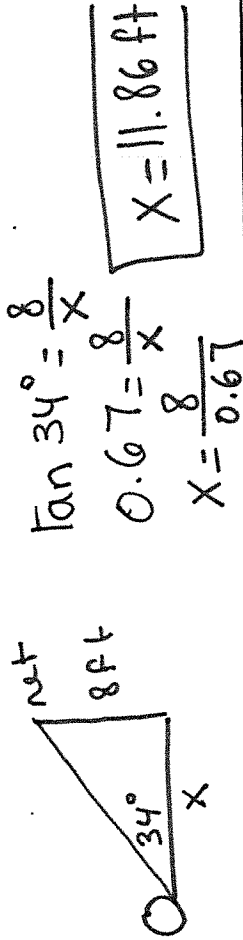
WHEN LOOKING DOWN TO AN OBJECT, ANGLE OF DEPRESSION IS FORMED



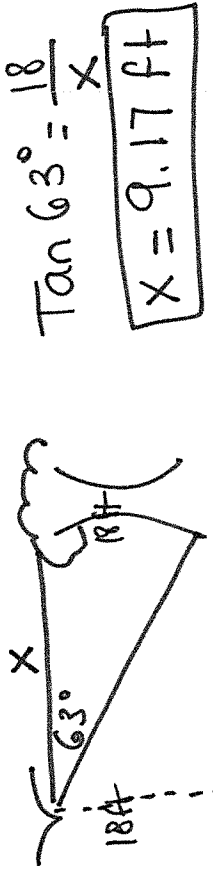
1 A dog is standing 5 feet from the base of a tree trying to catch a cat that is 16 feet up the tree. What is the angle of elevation from the point the dog is standing on the ground to the cat in the tree?



2 The angle of elevation from a soccer ball to the ground to the top of the goal is 34° . If the goal is 8 feet tall, what is the distance from the ball to the goal?



3 The angle of depression from an eagle sitting on top of a flagpole to the base of a tree is 63° . If the flagpole is 18 feet tall, then what is the distance between the pole and tree?



4 A shark is swimming 28 feet below sea level. If the angle of depression from a boat on the water to the shark is 19° , then what is the horizontal distance between the boat and shark?

