

# Bad Case of the Stripes

**What** is the most important event in the beginning?

- A. Camilla did not know what to wear to school.
- B. Camilla became covered in rainbow stripes.



**How** does Camilla feel about lima beans?

- A. She doesn't care about lima beans.
- B. She loves them, but she doesn't eat them.
- C. She loves them and she always eats them.



Who is this character?

- A. She is the main character.
- B. She is the lady who cures Camilla.
- C. She is Camilla's grandmother.



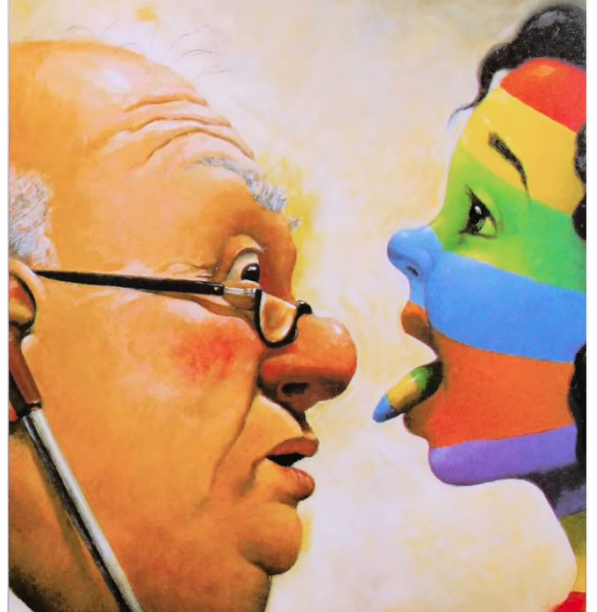
**Why** is Camilla on the news?

- A. because she won a prize at the school talent show.
- B. because no one had ever seen a case of the stripes before.
- C. because she wanted to show off to everyone.



**What** did the doctor do about Camilla's stripes?

- A. He took her straight to the hospital.
- B. He did not help her at all and he told her to stay home from school.
- C. He gave her an ointment to use.



**How** did the kids respond when they saw Camilla's stripes?

- A. They teased and made fun of her.
- B. They felt sorry for her.
- C. They tried to help her get rid of her stripes.



**What** is the author trying to tell you?

- A. Always try to get people to like you.
- B. Be proud of who you are and don't be afraid to be different.
- C. Everyone should eat lima beans because they are healthy.

