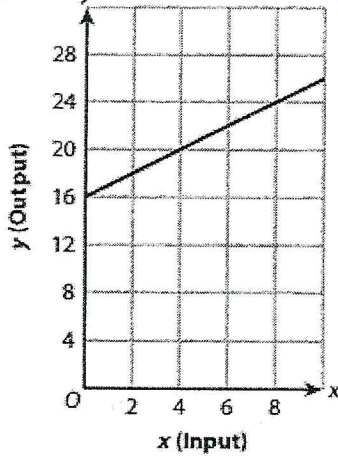


### Linear Function:

10). Is this a linear function? Yes or No



11). Write two equations that would NOT be a linear function:

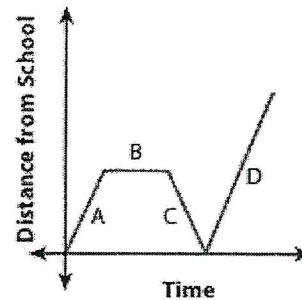
a).  $y = 3x^2 + 5$

b).  $y = 8 + 3x^4$

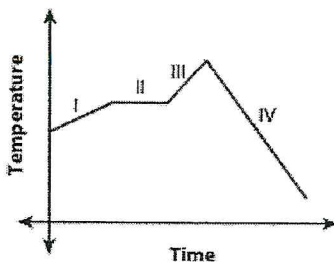
### Analyze a graph:

12). Describe what is happening in section D?

Section D is Increasing & positive.



13). This graph shows the temperature for a day in a city. Tell whether each statement is True or False.



Compare each description to its corresponding section of the graph.



- Section I: The temperature increases for a few hours.
- Section II: The temperature decreases for few hours.
- Section III: The temperature stays the same for a few hours.
- Section IV: The temperature decreases from the high for the day until the end of the day.

☒ True

☐ False

☐ True

☒ False

☐ True

☒ False

☒ True

☐ False