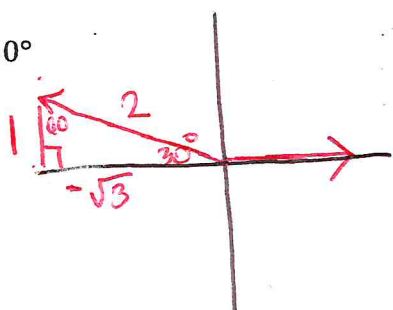


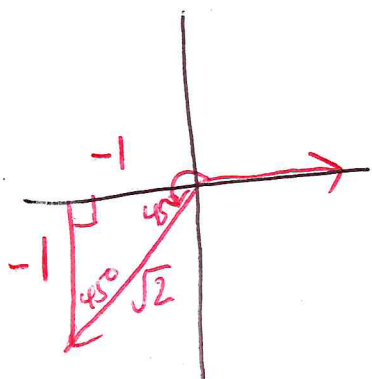
Examples: Draw and label the reference triangle that corresponds with each of the following angle measures.

1) 150°



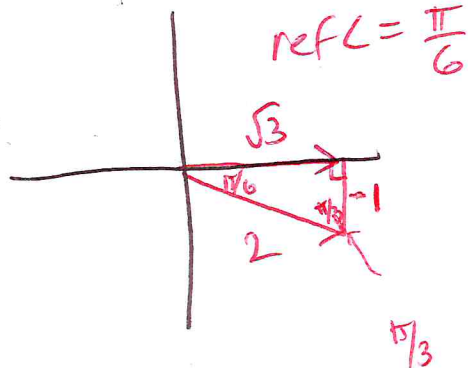
$$\text{ref } \angle = 180 - 150 = 30^\circ$$

2) 225°



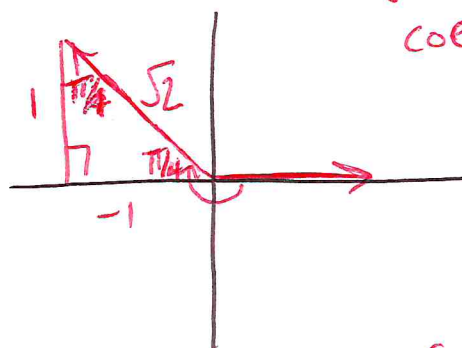
$$\text{ref } \angle = 225 - 180 = 45^\circ$$

3) $-\frac{\pi}{6}$



$$\text{ref } \angle = \frac{\pi}{6}$$

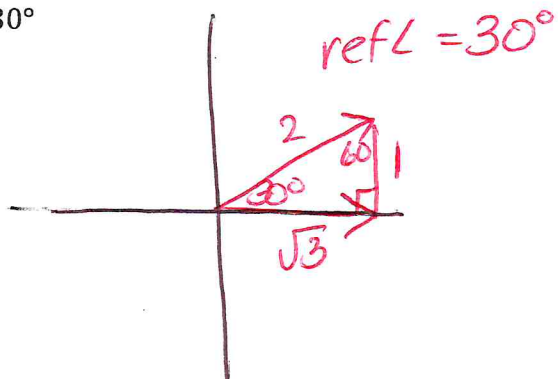
5) $-\frac{5\pi}{4}$



$$\text{ref } \angle = \frac{\pi}{4}$$

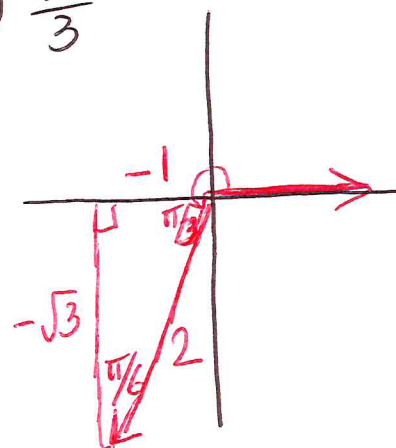
(cover up coeff. of π)

4) 30°



$$\text{ref } \angle = 30^\circ$$

6) $\frac{4\pi}{3}$



$$\text{ref } \angle = \frac{\pi}{3}$$