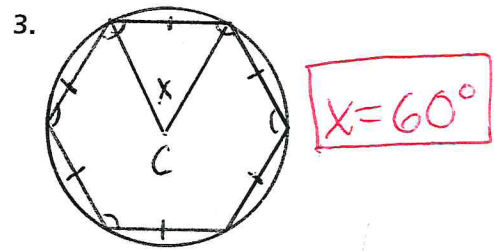
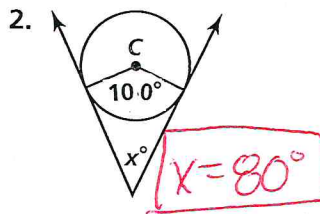
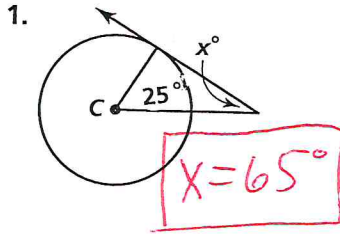


Practice 12-1

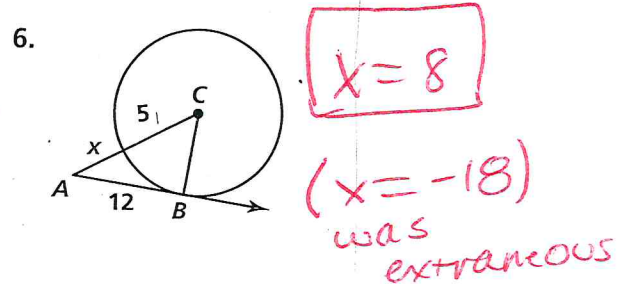
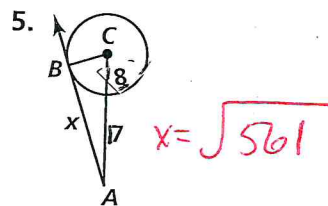
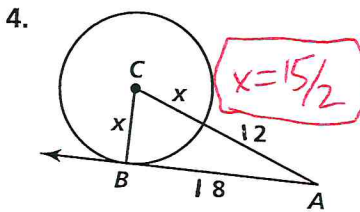
Key

Tangent Lines

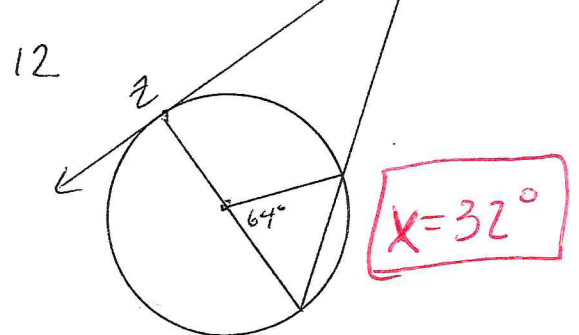
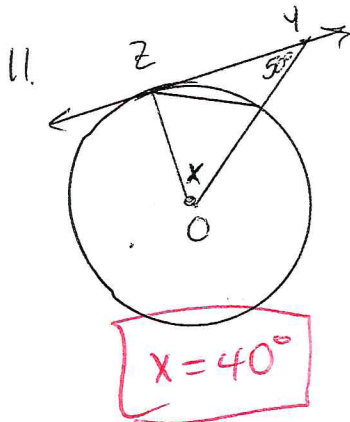
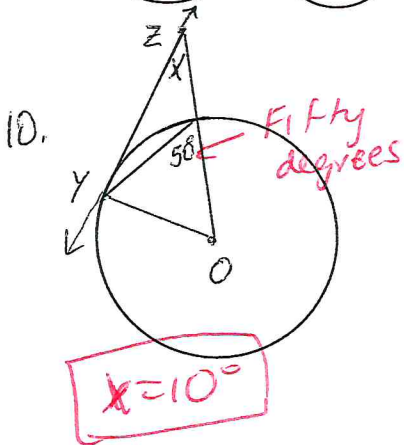
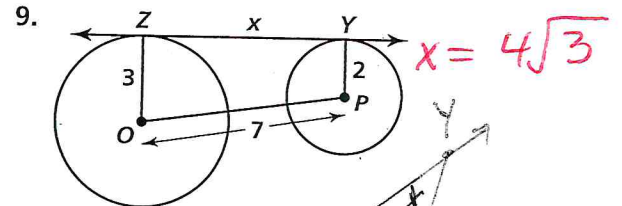
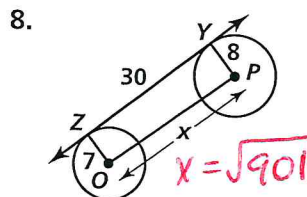
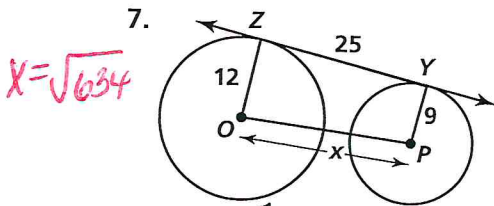
Assume that lines that appear to be tangent are tangent. C is the center of each circle. Find the value of x .



In each diagram, \overleftrightarrow{AB} is tangent to $\odot C$ at B . Find the value of x .



In each diagram, \overleftrightarrow{ZY} is tangent to circles O and P . Find the value of x .



In each diagram, a polygon circumscribes a circle. Find the perimeter of each polygon.

