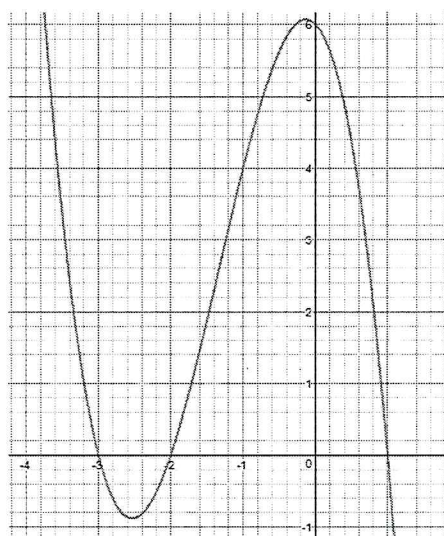
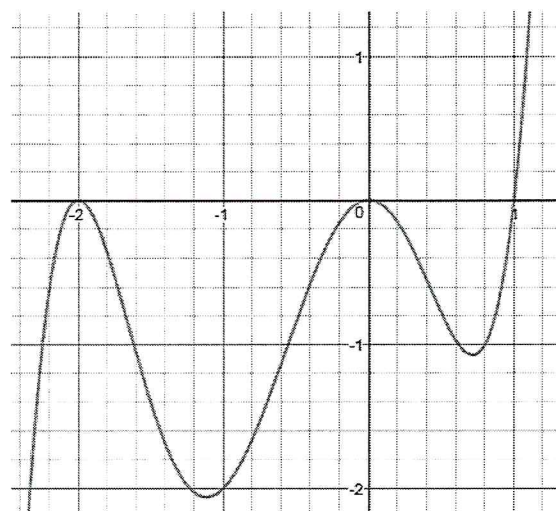


Write the equation in factored form of the given graph. Pay attention to multiplicities.

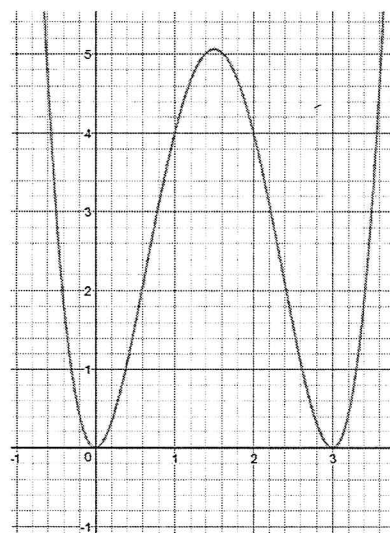
26)



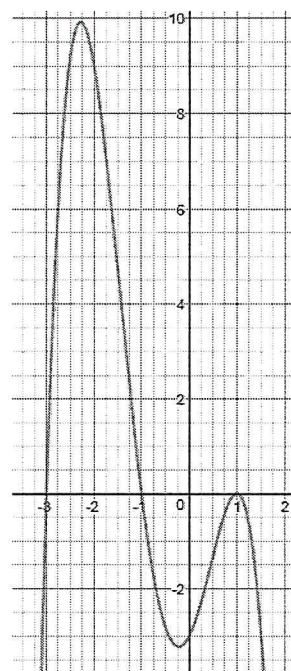
27)



28)



29)



30) Based on the end behavior, match each function with its graph. Be able to explain how you made each decision. *reference a end n.*

$$f(x) = x^3 + -4x + 2$$

$$g(x) = -x^4 + 2x^3 + 2x$$

$$h(x) = -x^3 + 2x - 1$$

$$j(x) = x^2 - x + 1$$

