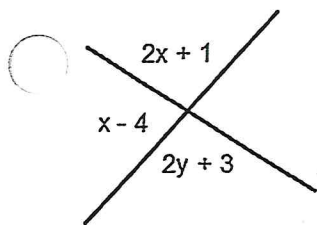
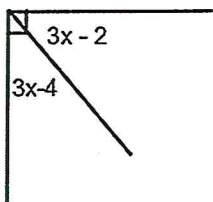


9. Solve for x and y . Justify every equation that you used



10. Solve for x



11. Construct lines m , n , v , and s . How are m and s related?

$$m \parallel n, n \perp v, v \parallel s,$$

12. Use the given figure. a) Identify opposite rays

b) Name the intersection of Planes EFG and BHC

c) Name 3 collinear points

