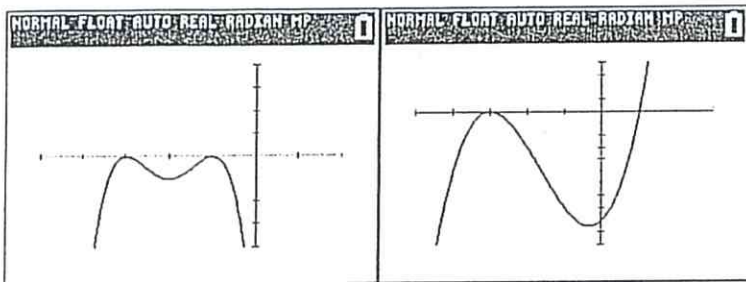


NO GRAPHING CALCULATOR SECTION

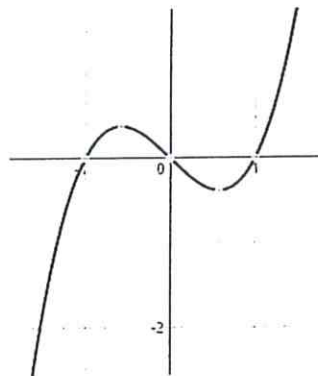
Write an equation in factored form for the graphs.

1.

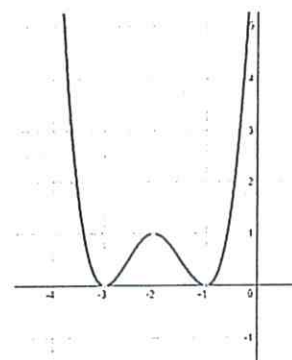
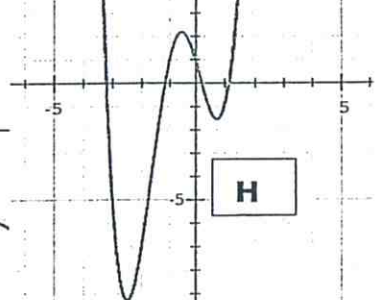
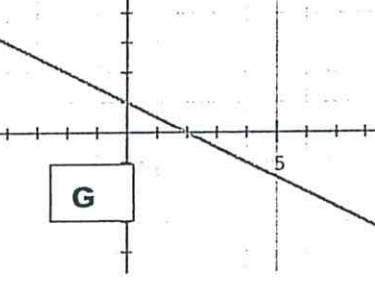
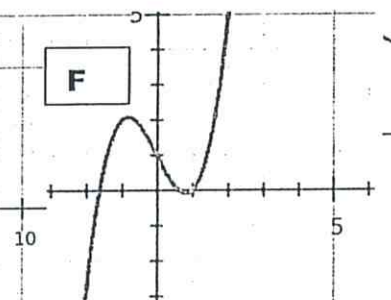
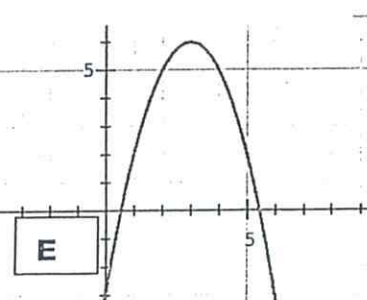
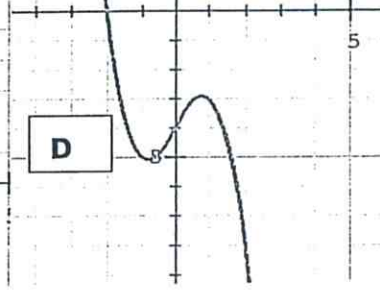
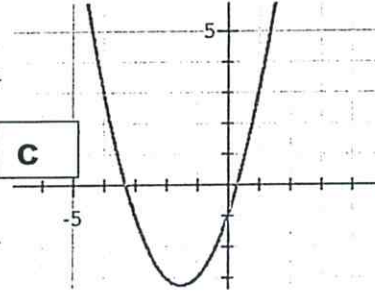
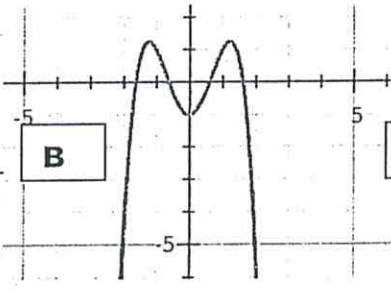
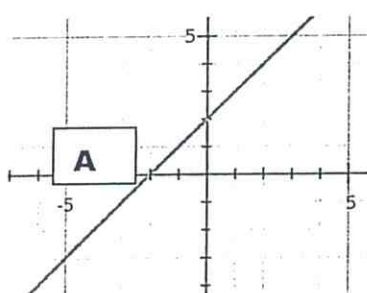


2.

3.



4.

Write the letters of the graphs that have the same END BEHAVIOR as the following equations:

5. $f(x) = 3x^5 + 4x^4 - 3x + 1$

6. $f(x) = -x^3 + 2x - 1$

7. $f(x) = -5x^4 - 3x^2 + 4x - 5$

8. $f(x) = x^6 + 5x^4 - 3x^2 + 7$