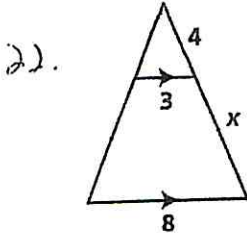
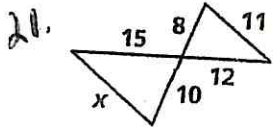
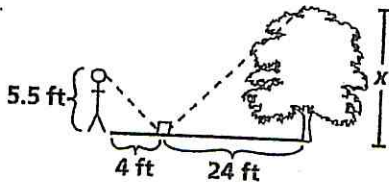


Find the value of x .



23. Natasha places a mirror on the ground 24 ft from the base of an oak tree. She walks backward until she can see the top of the tree in the middle of the mirror. At that point, Natasha's eyes are 5.5 ft above the ground, and her feet are 4 ft from the image in the mirror. Find the height of the oak tree.

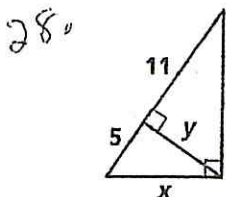
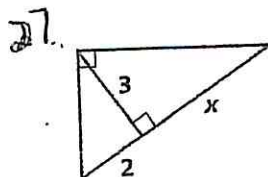
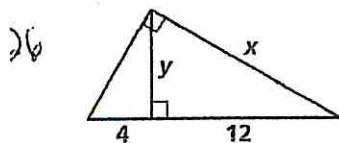


Find the geometric mean of each pair of numbers.

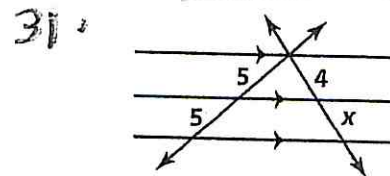
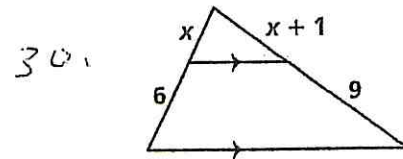
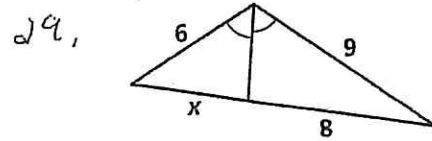
24. 4 and 16

25. 11 and 7

Find the values of the variables.



Find the values of the variables.



32.

The scale on a map is 1 in. = 120 mi. If it is $6\frac{1}{2}$ in. on a map from Cincinnati, Ohio, to Destin, Florida, what is the actual distance in miles?