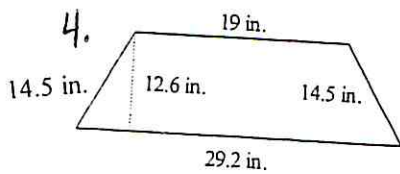
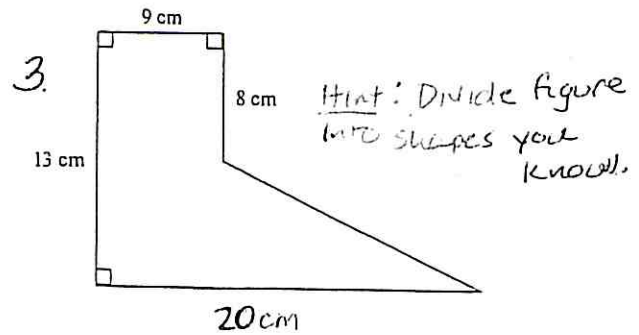
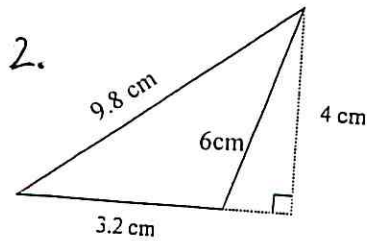
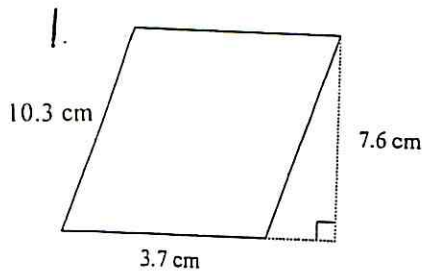
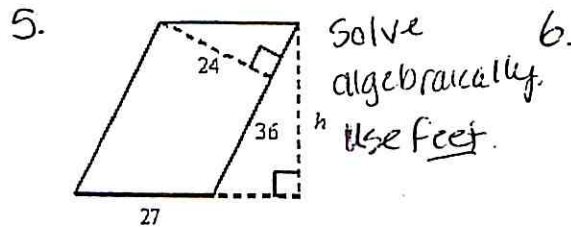


Show all work. <sup>\*</sup>Figures are not drawn to scale. Use proper units

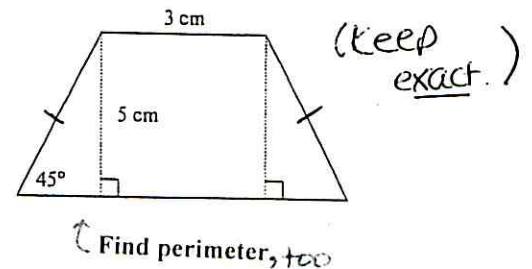
Find the area and perimeter for each figure in 1-4.



Find the value of  $h$  in the parallelogram.

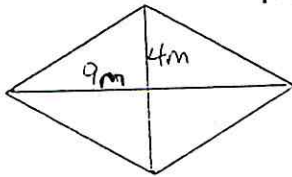


Find the area of the trapezoid.



7. Find the area of the rhombus.

Find perimeter.

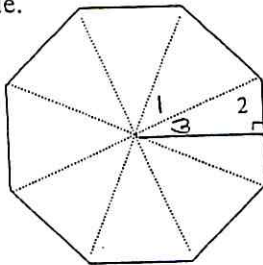


8.

Find the area of a regular decagon with an apothem 15.7 feet long and a side 9 feet long. Round your answer to the nearest tenth.

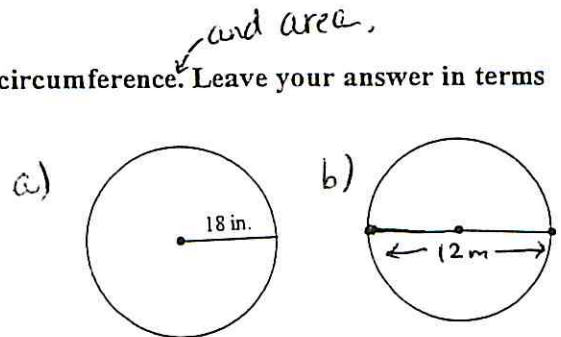
9. Given the regular polygon, find the measure of each numbered angle.

Show work for each.

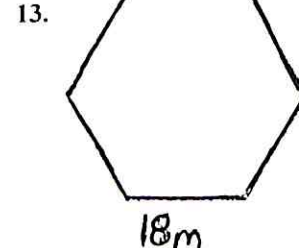
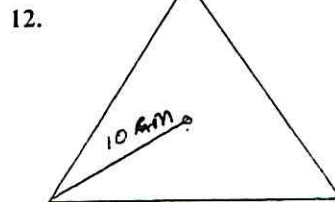
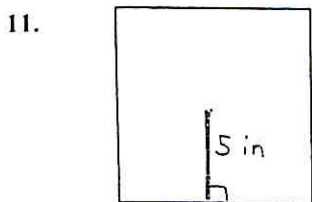


10.

Find the circumference. Leave your answer in terms of  $\pi$ .



For 11-13, find the area of each regular polygon. Redraw and label the special right triangle formed. Show angle & side work.



Don't have to use  $\frac{1}{2}ap$