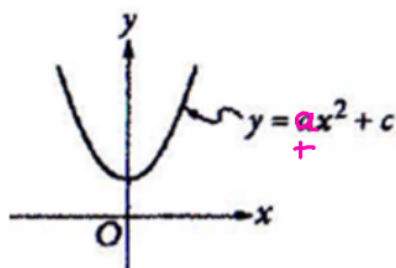


# Bell Work Thursday 09/13

SAT



The **vertex** of the parabola in the  $xy$ -plane above is  $(0, c)$ . Which of the following is **true** about the **parabola** with the equation  $y = -a(x - b)^2 + c$

negative  $(b, c)$

$$y = a(x - h)^2 + k$$

vertex  $(h, k)$

- A. The **vertex** is  $(b, c)$  and the graph opens upward.
- ☒ B. The **vertex** is  $(b, c)$  and the graph opens downward.
- ☐ C. The **vertex** is  $(-b, c)$  and the graph opens upward.
- ☐ D. The **vertex** is  $(-b, c)$  and the graph opens downward.