

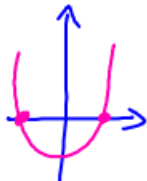
SAT Bell Work Tuesday 09/11

Which of the following is an example of a function whose graph in the xy -plane has no x -intercepts?

- A. A linear function whose rate of change is not zero
- B. A quadratic function with real zeros
- C. A quadratic function with no real zeros
- D. A cubic polynomial with at least one real zero



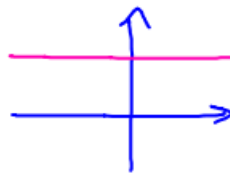
1 real sol



2 real sol.

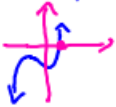


No real sol.



HOY
 $y = 5$

slope



NOX