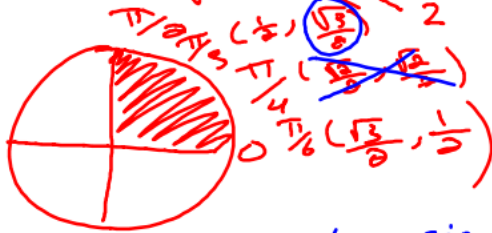


bellwork Tuesday 02/06

Section 4.5 review

$\tan x = \sqrt{3}$  and  $0 < x < \frac{\pi}{2}$  find  $x$



$$\tan = \frac{y}{x} = \frac{1}{\frac{1}{2}} = \frac{1}{\frac{1}{2}} \cdot \frac{2}{2} = \frac{2}{1} = 2$$

$$\tan = \sqrt{3}$$

$$x = \frac{\pi}{3}$$

$$\tan = \frac{\sin}{\cos} = \sqrt{3}$$

