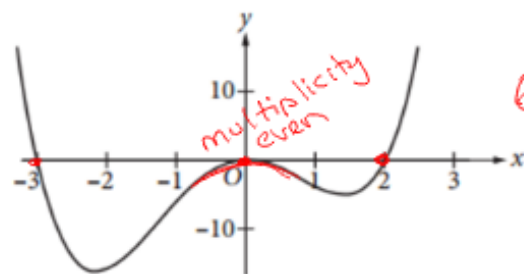


Bellwork Monday 11/6

Non-Calculator

11

SAT prep



Quartic

Which of the following could be the equation of the graph above?

A) $y = x(x - 2)(x + 3)$

B) $y = x^2(x - 2)(x + 3)$

C) $y = x(x + 2)(x - 3)$

D) $y = x^2(x + 2)(x - 3)$

x^3 (cubic)

zeros: 0, -3, 2
multiplicity of 2