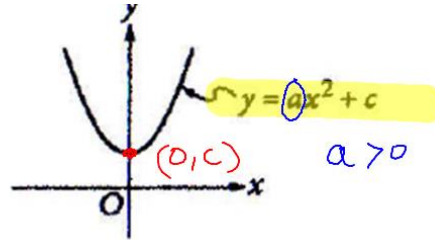


$$a(x - \underline{h})^2 + \underline{k}$$



The vertex of the parabola in the xy -plane above is $(0, c)$. Which of the following is true about the parabola with the equation $y = \text{negative } a(x - b)^2 + c$?

- A) The vertex is (b, c) and the graph opens upward.
- ☒ B) The vertex is (b, c) and the graph opens downward.
- ☒ C) The vertex is $(-b, c)$ and the graph opens upward.
- D) The vertex is $(-b, c)$ and the graph opens downward.