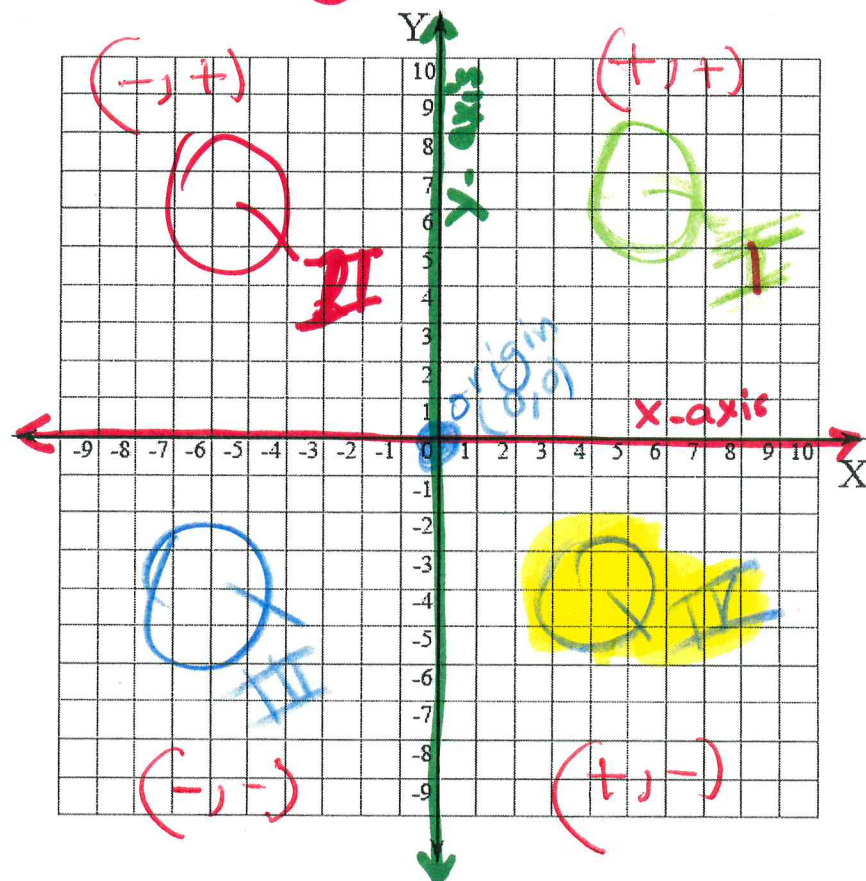


the Coordinate plane 1.

- A **coordinate system**, or **coordinate plane**, is used to locate points in a 2-dimensional plane
- The horizontal number line is the **X-axis**.
- The vertical number line is the **Y-axis**.
- Their intersection is the **origin**. (Label)



- The coordinate plane contains four quadrants (I, II, III, IV). Label the quadrants.
- Any point can be located within one of the four quadrants in the coordinate plane using a specific **ordered pair** of numbers, called its **Coordinate**.

(x, y)

- The first number in an ordered pair is the x-coordinate.
- The second number is the y-coordinate.

Example: **(3,2)** 3 is the x-coordinate, 2 is the y-coordinate.

- A point is defined on the coordinate plane by one, **AND ONLY ONE**, ordered pair.