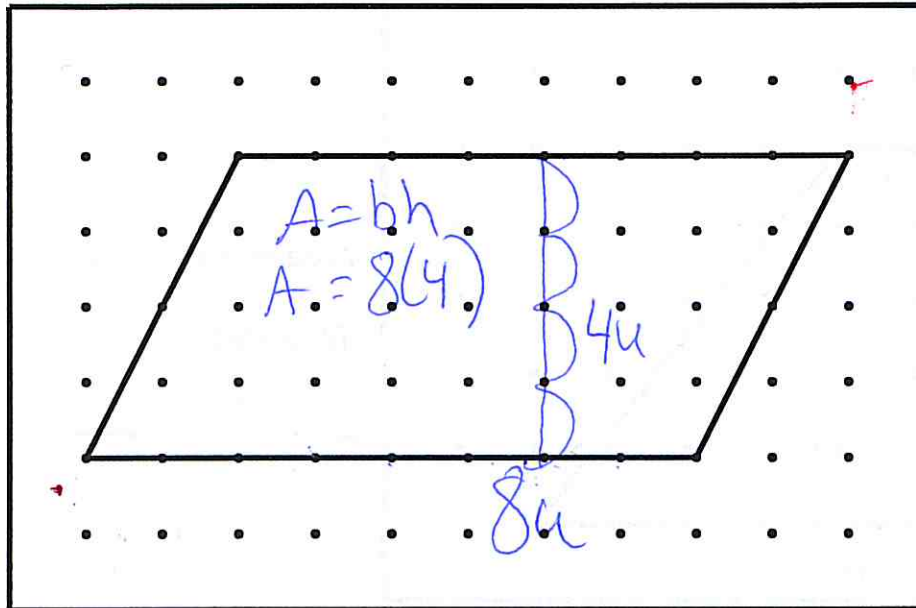


AREA OF PARALLELOGRAMS AND TRAPEZOIDS #1

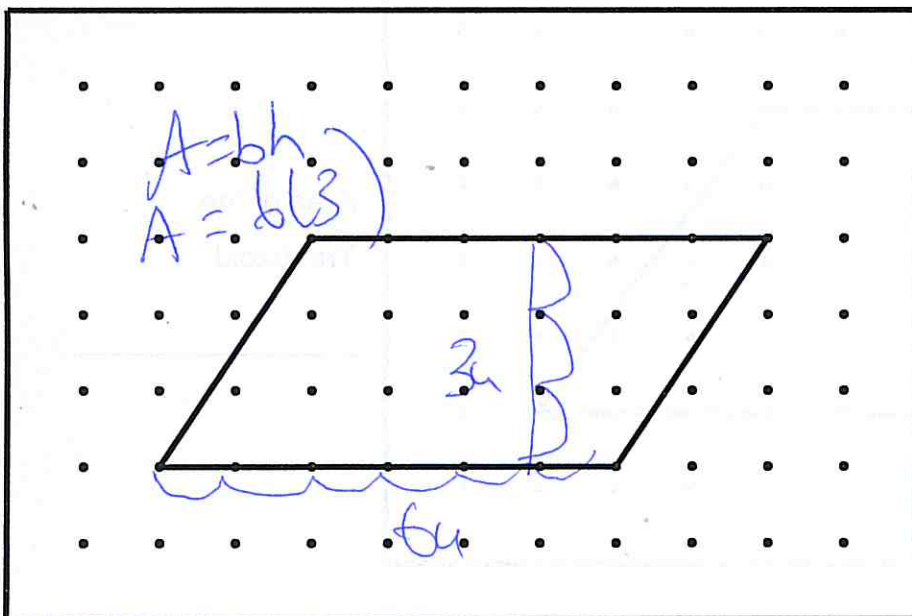
- 1.) Use the rectangular dot paper to find the area of the parallelogram by composing and decomposing the parallelogram into triangles and rectangles.



Area of the
Parallelogram:

$32u^2$

- 2.) Use the rectangular dot paper to find the area of the parallelogram by composing and decomposing the parallelogram into triangles and rectangles.



Area of the
Parallelogram:

$18u^2$